

Source: Robert Hobb Architects, Canyon Oaks Design Submitter, March 18, 2015

Site Plan

Figure 2-4  
City of Calabasas





Existing

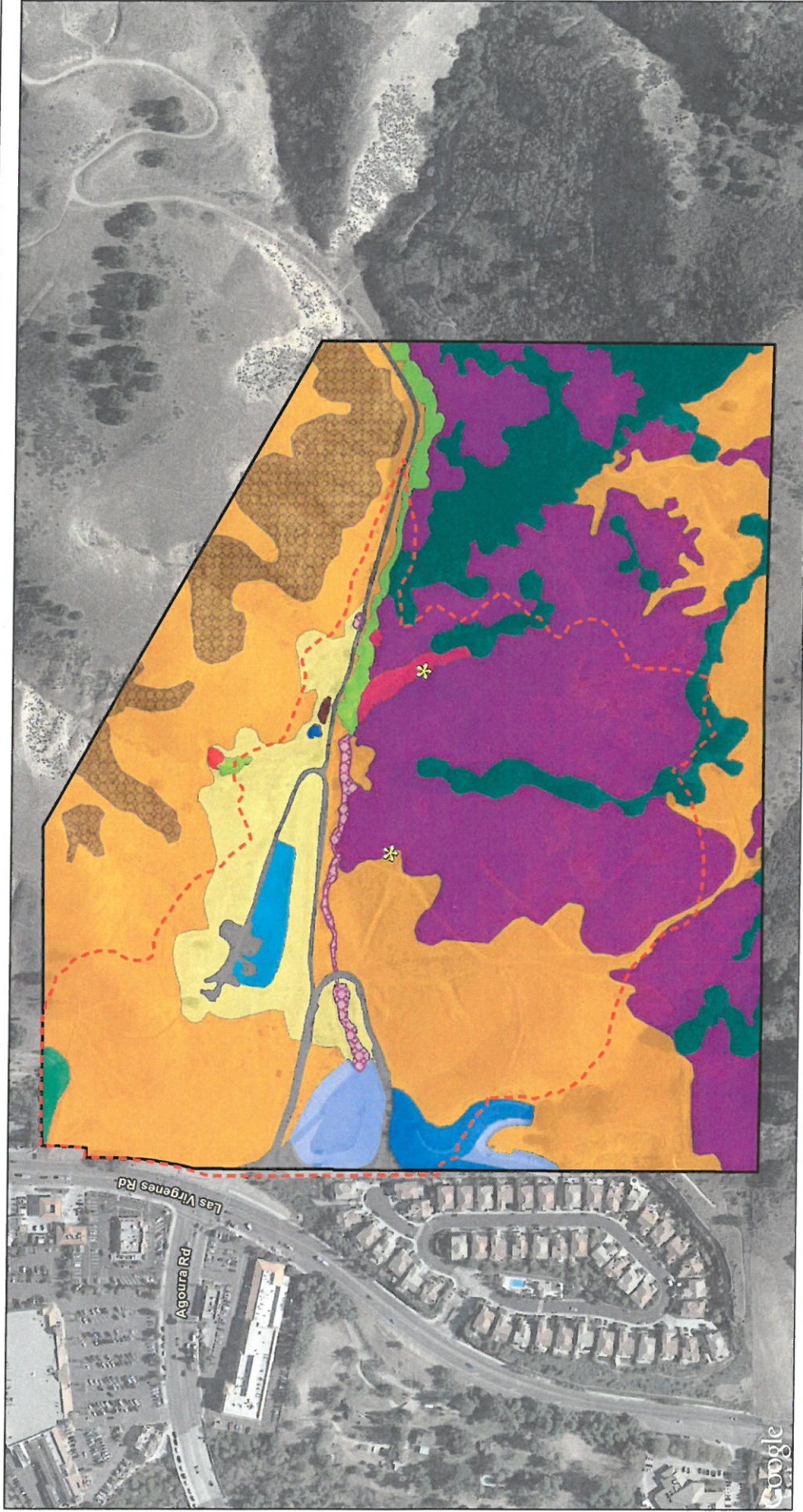


Proposed

*Source: Robert Hidey Architects, Canyon Oaks Design Submittal, March 18, 2015*

Pre and Post-Development  
View from Agoura Road

Figure 4.1-8  
City of Calabasas

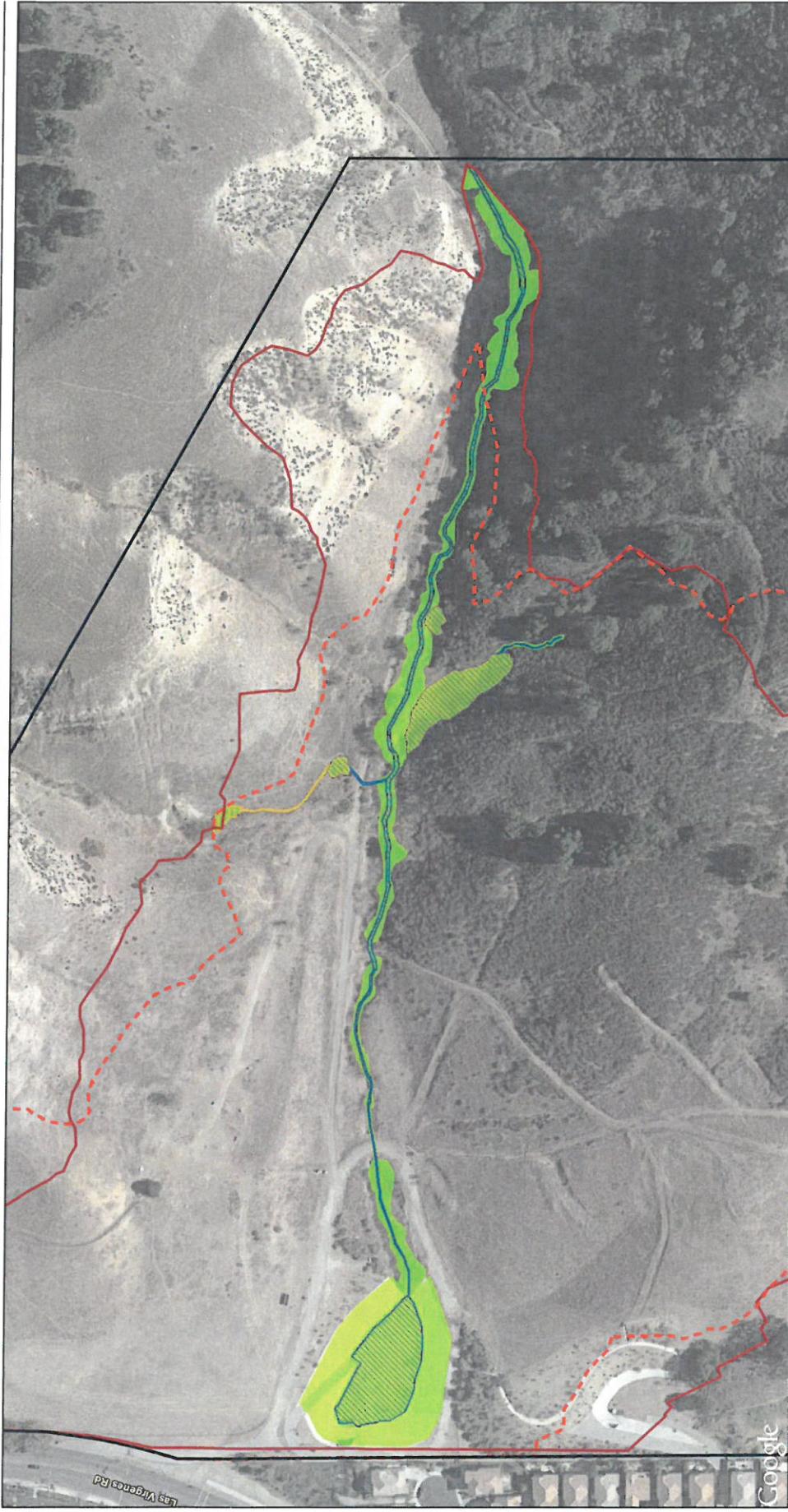


Google Maps Aerial, (c) 2015

- Catalina Mariposa Lily Locality
- Development Footprint
- Parcel Boundary
- Road/Disturbed
- Detention Basin
- Ornamental
- Annual Brome Grassland
- Cattail-Saltgrass Marsh
- Bulrush-Saltgrass Marsh
- Dwarf Nettle Herbaceous Stand
- Slingshot Nettle Herbaceous Stand
- Summer Mustard Herbaceous Stand
- Coyote Brush Scrub
- Coastal Buckwheat Scrub
- Purple Sage Scrub
- Mulefat Thickets
- Coast Live Oak Woodland
- Arroyo Willow Thickets
- Yerba Mansa Meadow

Habitat Map

Figure 4.3-1  
 City of Calabasas



Imagery provided by Google and its licensors © 2015.

- Parcel and Survey Area Boundary
- Current Development Footprint
- Previous Development Footprint
- Jurisdictional Features (Acreages: Current/Previous)
  - RWQCB Waters of the Slate (0.05/0.04)
  - USACE/RWQCB Welland Waters of the U.S. (0.28/0.28)
  - USACE/RWQCB non-Welland Waters of the U.S. (0.61/0.66)
  - CDFW Streambed/Banks and Associated Riparian Vegetation (2.27/2.61)
  - Riparian Vegetation (2.27/2.61)

### Jurisdictional Delineation Map

Figure 4.3-3  
 City of Calabasas

